

Sporting Solutions



Drainage • Water Supply • Rainwater • Water Conservation • Plumbing

*British
Expertise*



Proudly associated with some of the UK's leading sports venues, Polypipe Terrain has an unrivalled history of supplying some of the most prestigious developments and iconic buildings of our modern age.



Wembley Stadium

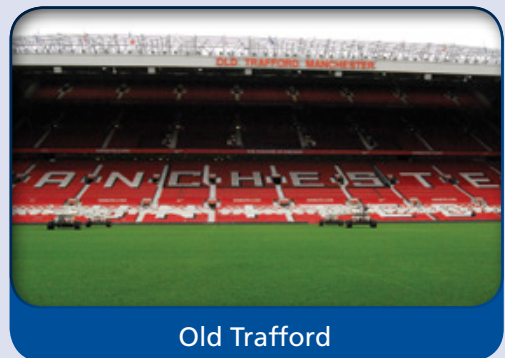


Millennium Stadium

On a par with the worlds' most able athletes, our products are tested under extreme conditions to bring outstanding performance with proven technology, backed by some of the most demanding 3rd party accreditation standards for complete peace of mind.



Etihad Stadium

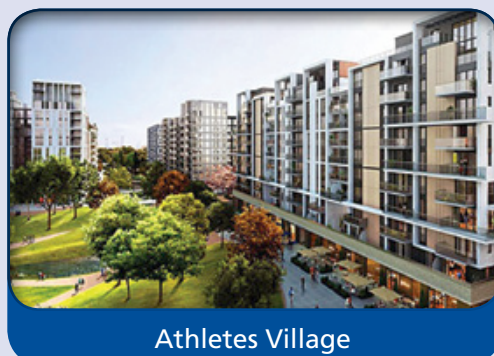


Old Trafford

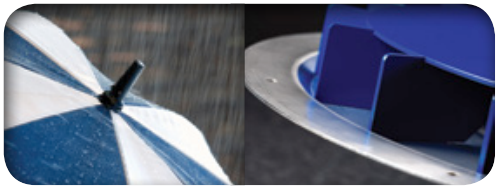
Unique construction challenges, such as the London Equestrian Arena are second nature to Polypipe's experts, on hand to research and develop solutions within budgets and building constraints.



Equestrian Centre



Athletes Village



Siphonic Rainwater

Designed to rapidly remove the high volumes of water deposited in extreme rainfall events from the roof areas of today's increasingly larger and often complex buildings, the Terrain HydroMax™ Siphonic drainage system offers a complete and proven solution.



Gravity Rainwater

A professional PVC-u solvent weld gravity pipework system that is quick and easy to install with a range of rainwater outlets to suit a variety of roof, balcony and terraces areas.



Above Ground Drainage

A uniquely engineered PVC-u solvent weld gravity pipework system with a wide range of associated fittings to ensure a 'fit and forget' internal drainage solution.



Traps & WC Pan Connectors

Complementing the Terrain drainage pipework system, a full range of Traps & WC Pan connectors enable easy connection to sanitary appliances.



Below Ground Drainage

Terrain PVC-u push fit gravity pipework systems are flexible and easy to install. With a comprehensive range of polypropylene gullies, p-traps and inspection chambers Terrain offer unrivalled installation options.

Sporting Solutions



Drainage - Water Supply - Rainwater Water Conservation - Plumbing



Drainage Ventilation System

The Terrain Pleura range of air balancing valves provide point of need ventilation to the internal drainage pipework system to protect trap water seals and can be utilised to significantly reduce pipework material requirements.



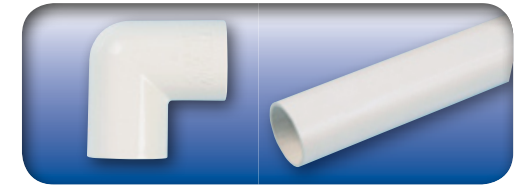
Hot & Cold Water

Polybutene pipe is ideal for hot & cold water distribution networks, offering durability and long-term performance. Polyplumb has natural flexibility and a fast push-fit jointing system for efficient installations.



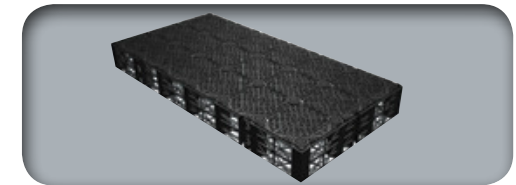
Pressure Pipework

EFFAST PVC is a reliable lightweight solvent weld high performance pipework system. It is ideal for water distribution networks, swimming pools, irrigation systems and water supply systems.



Condensate Pipework

In today's 'air conditioned world' as we strive to maintain comfortable ambient temperatures, Polypipe's condensate piping systems provide the solution to reliable collection and removal of waste condensate from A/C units.

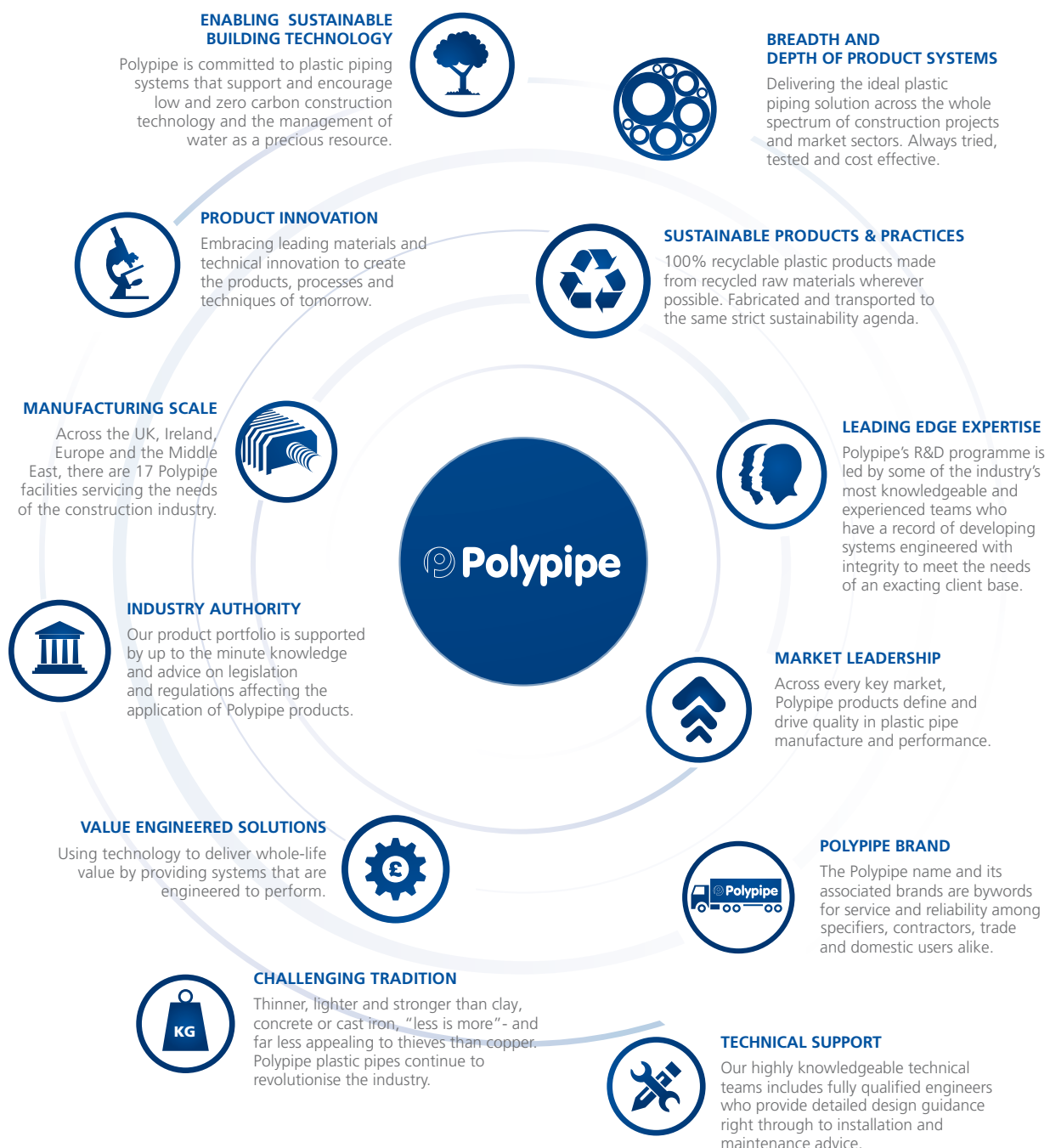


Water Conservation

Suitable for both water storage and distribution, the Terrain Permavoid geo cellular units are lightweight and structurally reliable. The units are accompanied with a range of geotextile membranes to offer an ideal solution for water conservation requirements.

Polypipe design and manufacture one of the widest ranges of plastic piping products, with over 20,000 product lines available and 30 principal brands. With a primary focus on developing and supporting pragmatic product systems through specific knowledge and understanding of the residential, commercial and infrastructure market sectors, we ensure that our customers can trust our unrivalled expertise to provide value engineered, fit for purpose piping solutions for the growing diversity and complexity of today's construction challenges.

Polypipe Gulf's technical experts are locally based and equipped to provide the Middle East Building Services Industry with a comprehensive range of high performance piping and water management systems. Supported by a continued investment in British manufacturing enables us to build on our proud heritage with market-leading brands such as Terrain Drainage, creating unique solutions to manage today's demanding use & removal of water in the built environment.



Sporting Solutions



Qatar Office

Polypipe Ltd
RTO Office
Level 14
Commercial Bank Plaza Tower
West Bay
P.O. Box 27111
Doha
Qatar
Tel: +974 4 452 8394

Middle East Head Office

Polypipe Middle East FZE
Showroom A2 SR 07
First Al Khail Street
Jebel Ali Free Zone
P.O. Box 18679
Dubai
United Arab Emirates
Tel: +971 4 880 6680
Fax: +971 4 880 6681

UK Office

Polypipe Terrain
New Hythe Business Park
College Road
Aylesford
Kent
ME20 7PJ
United Kingdom
Tel: +44 (0)1622 795200
Fax: +44 (0)1622 716796

Email: middleeast@polypipe.com