

Polystorm stormwater solution selected for Dubai Arena at City Walk

Polystorm will manage stormwater at the giant indoor multi-use venue

CASE STUDY

Project

Dubai Arena at City Walk

Client

Meraas

Application

Soakaway

Products Used

Polystorm



Dubai Arena at City Walk is a giant multipurpose indoor venue that can accommodate a capacity of 20,000 people.

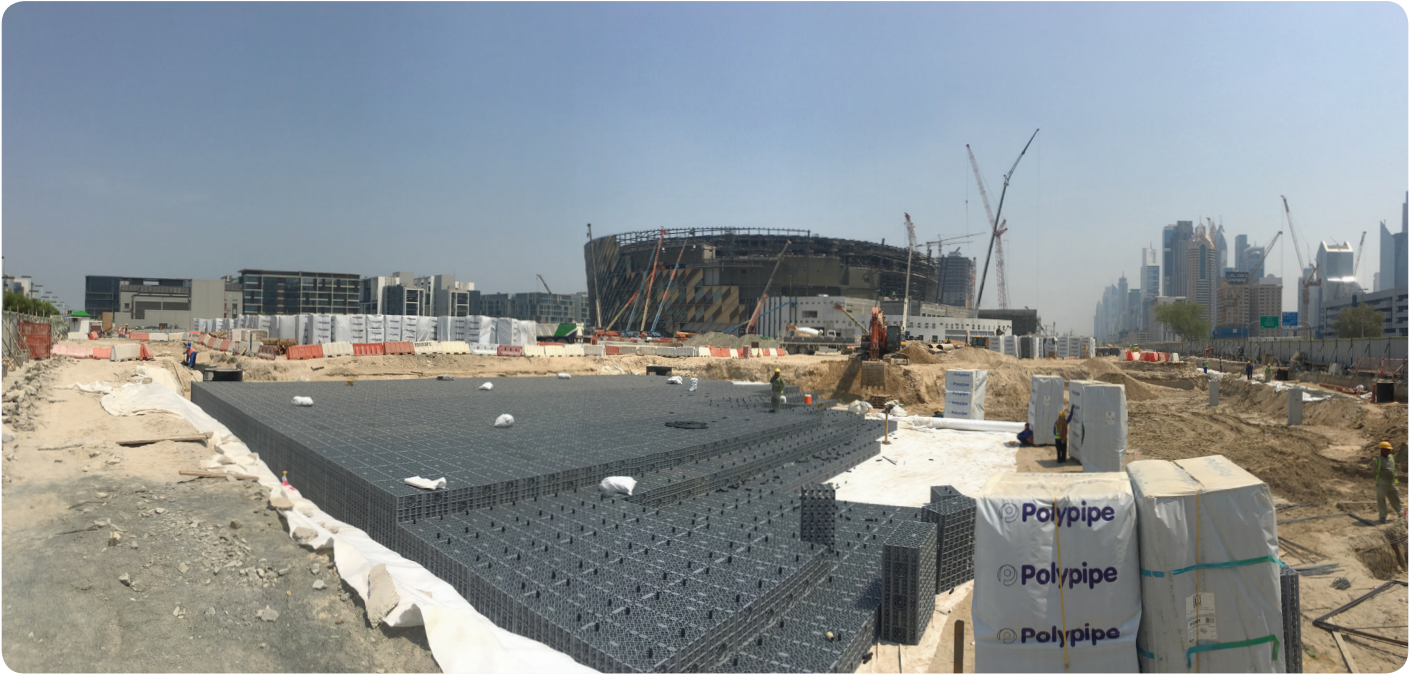


Being the largest indoor arena of its kind in the UAE, Dubai Arena will be home to international entertainment such as music concerts, sporting events and other large-scale live shows and mega events, bringing yet another major tourist attraction to the city.

Polypipe Middle East worked alongside Lead Consultant, Dar Al Handasah, and Main Contractor, Al Shafar General Contracting. During the product selection process MEP Contractor, Proscap, a specialist in landscape construction, was invited to the Polypipe Middle East technical facility to learn more about its product manufacturing process and testing. This gave them the confidence they needed to go ahead with selecting Polystorm. As it was Proscap's first infrastructure project, the company sought a trusted manufacturer with proven experience in the region to ensure the job would be delivered on time and to a quality standard.



The project required a local solution for stormwater discharge to the network with low flow rates, within a limited area in the car park. With its unique, luxury architecture and landscaping, the project demanded a high-performing and reliable stormwater management solution. Based on site condition and technical analysis, geocellular water management system Polystorm was an ideal fit.



Polypipe Middle East was able to demonstrate that Polystorm is a highly durable solution that complies with local and international design standards. In addition, it offers cost and technical performance benefits compared to traditional solutions like concrete and aggregate. Polypipe Middle East worked on a similar project for Meraas at the Jebel Ali Hills development.

An efficient and versatile geocellular water management system, Polystorm is ideal for infiltration and soakaway, as well as attenuation and detention. Its 95% void ratio makes it ideal for maximum water capture and retention, and its load bearing capacity of 40 tonnes/m² means it can be used under trafficked and loaded surfaces. By offering a completely bespoke approach to subsurface water storage, Polystorm gives specifiers and contractors the opportunity to create bespoke designs that match the exact demands of their development.

Polypipe Middle East's water management systems are ideal for the urban water cycle, to capture, store, manage and reuse water across the built environment. Its solutions also support the ever more sustainable and water-conscious Middle East region.

