

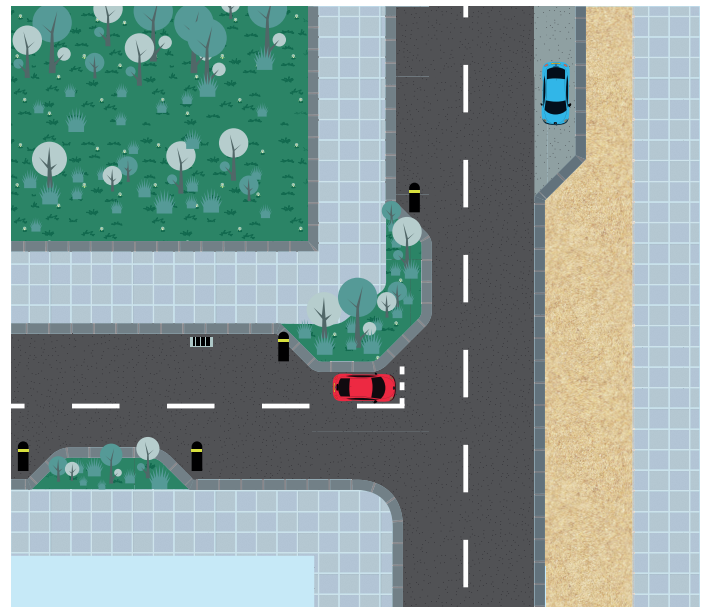
Permavoid in the Urban Environment - Roads & Highways

The management of surface water run-off from roads and highways can provide substantial benefits to the built environment, encouraging the use of water as a valuable resource.

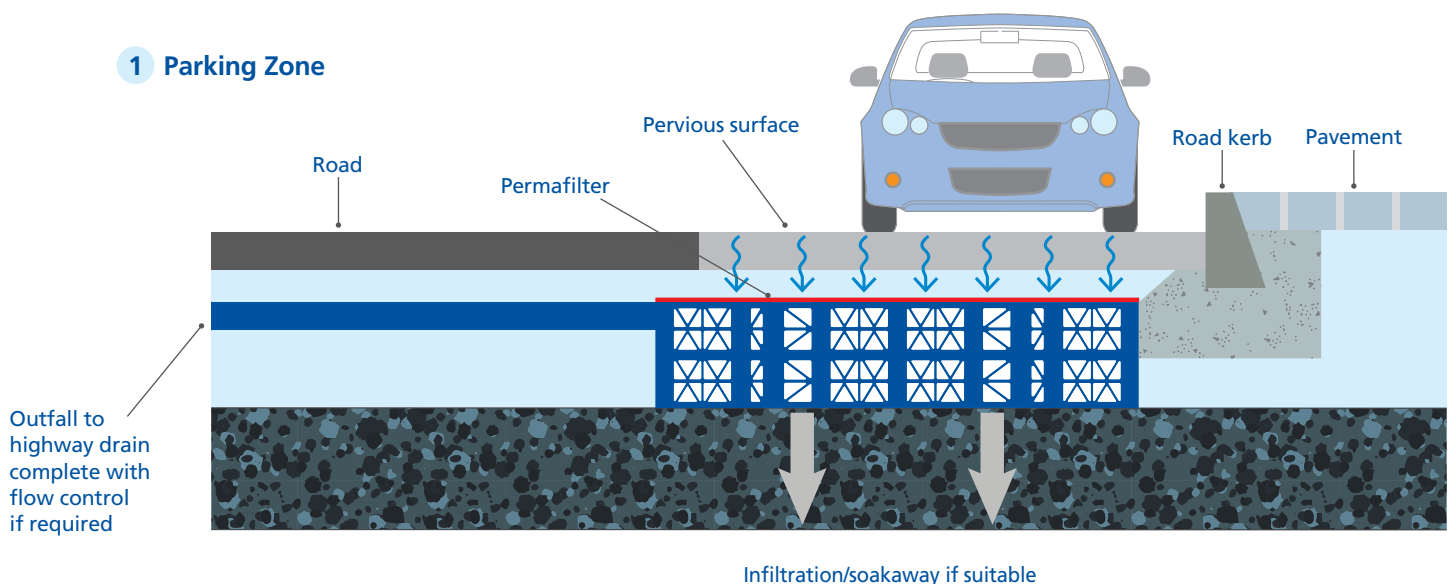
As a result, water management features can be prime design elements in road and highway drainage. Incorporated into a new development or retrofitted into an overall SuDs scheme, Permavoid can enhance the natural environment by providing improved detention, attenuation, infiltration/soakaway and treatment at source.

Parking Zones

Pervious off road parking zones can be incorporated into highway designs, particularly in residential areas. Installed beneath pervious surfaces, the Permavoid range of components perform as a sub-base replacement and drainage system to manage the majority of stormwater events, providing treatment and detention at source, at shallow depths.



1 Parking Zone



Strong
Interlocking Raft



Beneath porous &
non-porous surfaces



Source Control



Treatment



Detention



Attenuation



Infiltration/
Soakaway

